

# METZNER DYNAMAT

Fly-knife cutting machines for tough and at the same time elastic materials



pic.: Metzner DYNAMAT 80

## FEATURES

- For cutting tough rubber and silicone products, textile-reinforced material and even dog bones
- Up to 4.000 exact cuts per minute
- For dry and moistened cutting
- For materials up to 120 mm width and height



pic.: Metzner DYNAMAT 40

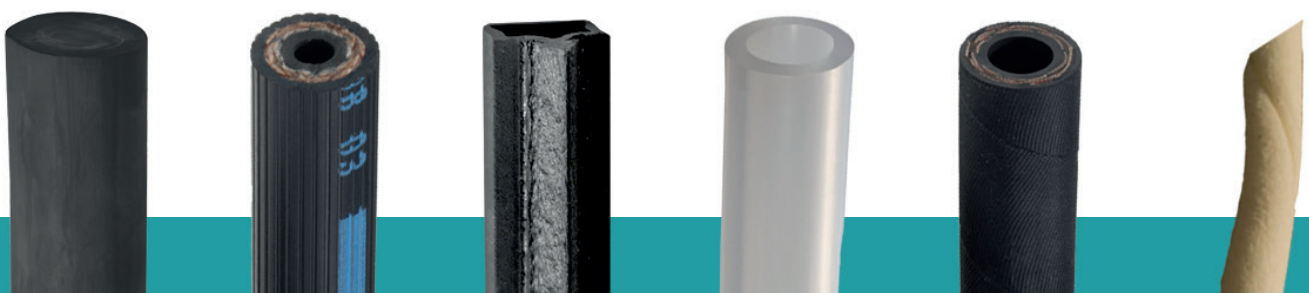


pic.: Metzner DYNAMAT 120

The DYNAMAT impact knife machines differ mainly in the size of material they can process.

The DYNAMAT 40 processes material of each, 40 mm width and height

The largest machine, the DYNAMAT 120 corresponding to 120 mm x 120 mm. More about this on the back page.



## ALL TECHNICAL DETAILS AT A GLANCE

| Performance data                   | DYNAMAT 20                | DYNAMAT 40                   | DYNAMAT 80                   | DYNAMAT 120                    |
|------------------------------------|---------------------------|------------------------------|------------------------------|--------------------------------|
| Dimension of material: width max.  | 20 mm                     | 40 mm                        | 80 mm                        | 120 mm                         |
| Dimension of material: height max. | 20 mm                     | 40 mm                        | 80 mm                        | 120 mm                         |
| Length interval                    | 0.1 mm                    |                              |                              |                                |
| Typical repeat accuracy            | ± (1mm + 0.2 % l)         |                              |                              |                                |
| Feeding speed max.                 | 60 MPM                    |                              |                              |                                |
| Cutting performance                | 4.000 cuts/min.           | 3.200 cuts/min.              |                              |                                |
| Available cutting technologies     | DYNAMAT 20                | DYNAMAT 40                   | DYNAMAT 80                   | DYNAMAT 120                    |
| Die cutting                        | –                         | –                            | –                            | –                              |
| Shear cutting                      | –                         | –                            | –                            | –                              |
| Draw cutting                       | –                         | –                            | –                            | –                              |
| Blade cutting                      | –                         | –                            | –                            | –                              |
| Hot cutting                        | –                         | –                            | –                            | –                              |
| Rotary cutting                     | ✓                         | ✓                            | ✓                            | ✓                              |
| Tools cutting                      | –                         | –                            | –                            | –                              |
| Drilling                           | –                         | –                            | –                            | –                              |
| Technical data                     | DYNAMAT 20                | DYNAMAT 40                   | DYNAMAT 80                   | DYNAMAT 120                    |
| Dimensions (L x W x H)             | 600 mm x 510 mm x 700 mm  | 2,100 mm x 838 mm x 1,650 mm | 2,500 mm x 600 mm x 1,400 mm | 3,100 mm x 1,000 mm x 1,800 mm |
| Electrical connection              | 3~400 V   50/60 Hz   10 A |                              |                              |                                |
| Compressed air connection          | –                         | –                            | –                            | –                              |
| Weight                             | 60 kg                     | 200 kg                       | 315 kg                       | 400 kg                         |
| Drive                              | Siemens                   |                              |                              |                                |
| Display                            | 7" touch screen (color)   |                              |                              |                                |
| Motor                              | servo motor               |                              |                              |                                |
| Consumption kVA   bar              | P: 1.4 kVA   –            |                              |                              |                                |
| Noise (idle)                       | < 75dB (A)                |                              |                              |                                |